



Beware!



An invasive insect called **Spotted Lantern Fly** can damage your trees



If you see egg cases, scrape them into a container of rubbing alcohol before spring!

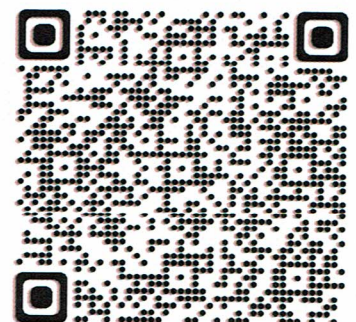
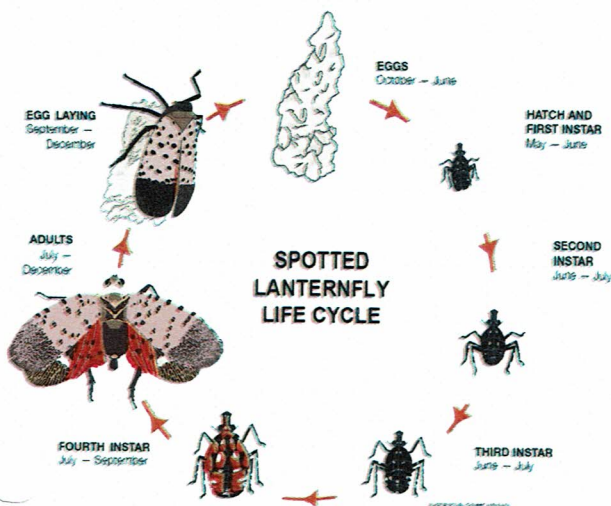
Each egg case contains about 30 eggs. By scraping them off your tree into rubbing alcohol which will kill them, there will be fewer spotted lantern flies next year!

For more information on this invader and how to help control it

visit:

<https://www.udel.edu/academics/colleges/canr/cooperative-extension/trending/spotted-lanternfly/>

or scan this code:



Odessa Tree Commission, Odessa, DE